

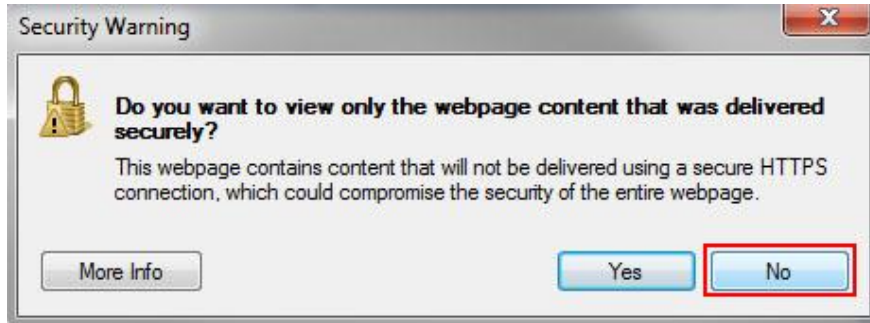
Make a Link

Note: The aim here is to familiarize you making a hyperlink on your website.
(First step – log into CMS.)

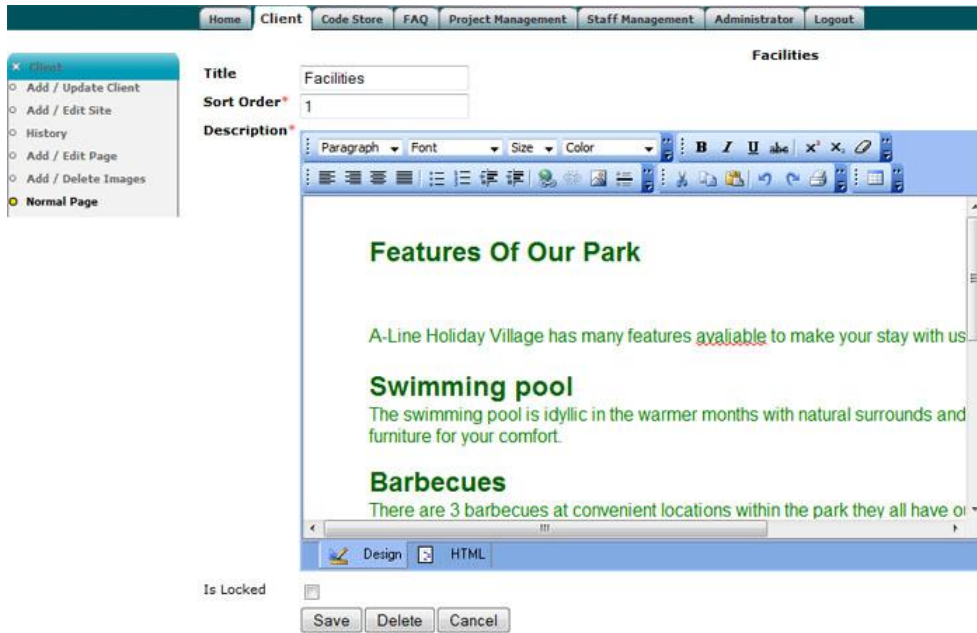
1. On the top left of the window is a link titled '**Edit Text**' or the title of the page e.g. '**Facilities**'. When you have found this link, click it.



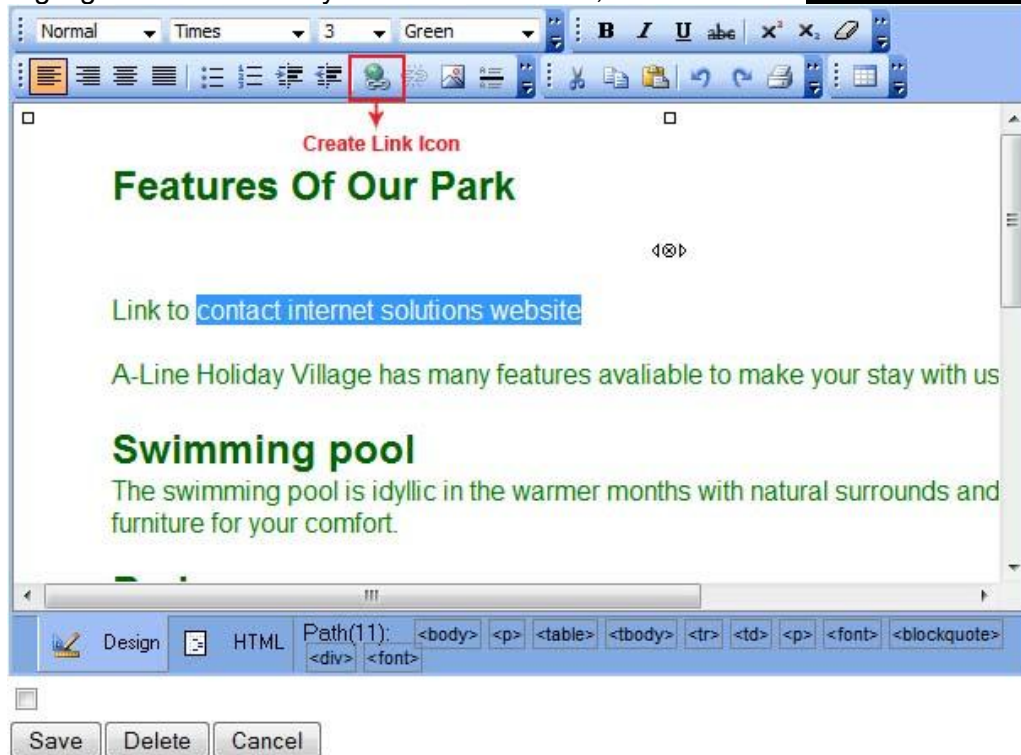
Note: If you use Internet Explorer 8 to do the changes, please select '**No**' in this POP window; otherwise it will not remember all the changes you have done on your website.



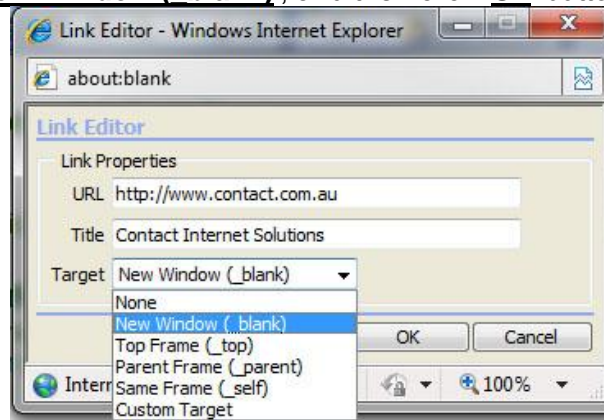
2. An editing box appears with the current layout of **text** and **pictures** (if you have any).



3. Highlight the words that you want to have link, and then click '**Create link icon**'.



4. A Link Editor Window pops up. Type the website address you want to link to, e.g. <http://www.contact.com.au>, and a title of the website. In the **'Target dropdown box'**, choose **'New Window (blank)'**, and then click **'OK'** button.



Note: 'New Window (blank)' opens the link in a new window or new tab, so the user will not lose your website on the Brower.

5. When you complete your editing, remember to click **'Save'**.

