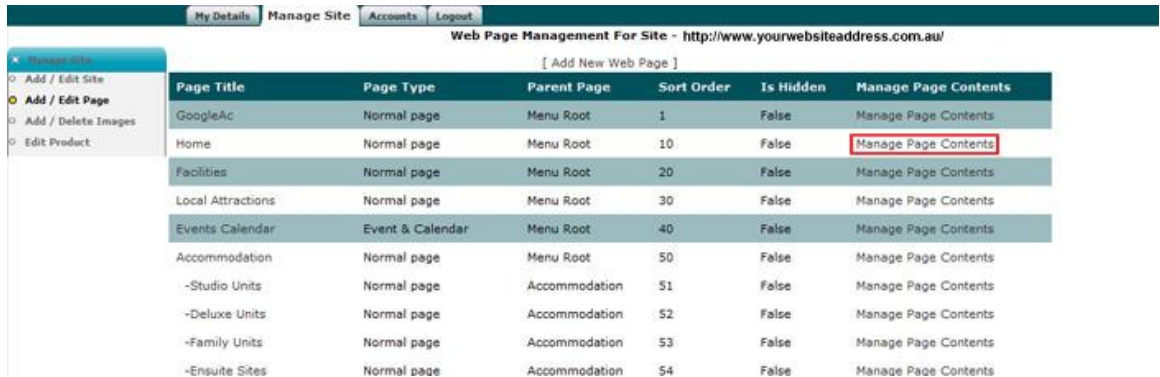


## Editing Rates

**Note:** The aim here is to familiarize you editing rates on your website.  
**(First step – log into CMS.)**

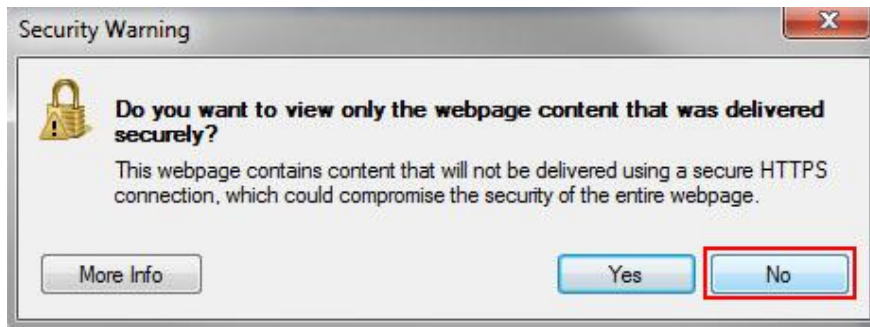
1. Click on '**Manage Page Contents**' to access rates page.



Web Page Management For Site - http://www.yourwebsiteaddress.com.au

Page Title	Page Type	Parent Page	Sort Order	Is Hidden	Manage Page Contents
GoogleAc	Normal page	Menu Root	1	False	Manage Page Contents
Home	Normal page	Menu Root	10	False	<b>Manage Page Contents</b>
Facilities	Normal page	Menu Root	20	False	Manage Page Contents
Local Attractions	Normal page	Menu Root	30	False	Manage Page Contents
Events Calendar	Event & Calendar	Menu Root	40	False	Manage Page Contents
Accommodation	Normal page	Menu Root	50	False	Manage Page Contents
-Studio Units	Normal page	Accommodation	51	False	Manage Page Contents
-Deluxe Units	Normal page	Accommodation	52	False	Manage Page Contents
-Family Units	Normal page	Accommodation	53	False	Manage Page Contents
-Ensuite Sites	Normal page	Accommodation	54	False	Manage Page Contents

Note: If you use Internet Explorer 8 to do the changes, please select '**No**' in this POP window; otherwise it will not remember all the changes you have done on your website.



2. Simply change the rate details on this page.

		Off-Peak	School Holidays	
S.N	Type	Price-A	Price-B	Price-C
1	2 Bedroom Apartments	\$150/Night Twin Share	\$165/Night Twin Share	
2	2 Roomed Spa Apartments	\$130/Night Twin Share	\$150/Night Twin Share	
3	2 Roomed Apartments	\$125/Night Twin Share	\$140/Night Twin Share	
4	Deluxe cabins	\$115/Night Twin Share	\$140/Night Twin Share	
5				
6	Cabins Internal Bathroom	\$85/Night Twin Share	\$95/Night Twin Share	
7	Holiday Flats	\$75/Night Twin Share	\$85/Night Twin Share	
8	Cabins -External Ensuite	\$70/Night Twin Share	\$80/Night Twin Share	
9	Ensuite Powered Sites	\$34/Night Twin Share	\$40/Night Twin Share	
10	Powered Sites	\$29/Night Twin Share	\$33/Night Twin Share	
11				

3. When you complete your editing, remember to click '**Save**'.

